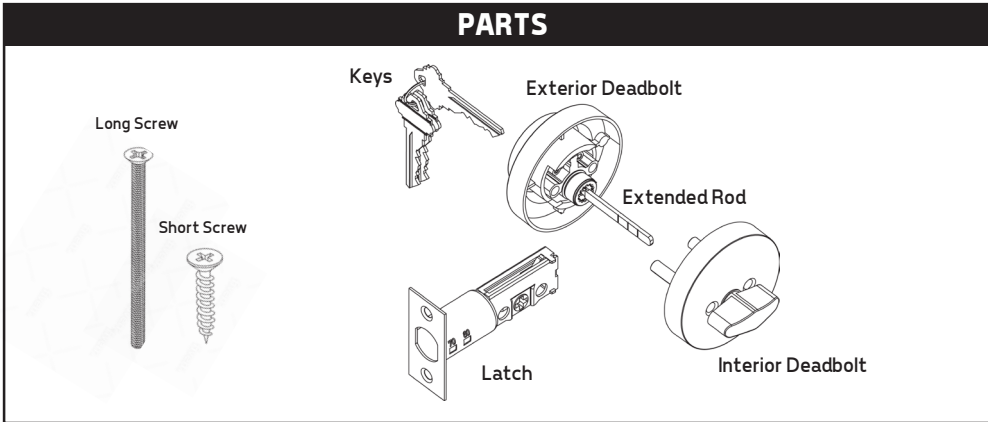




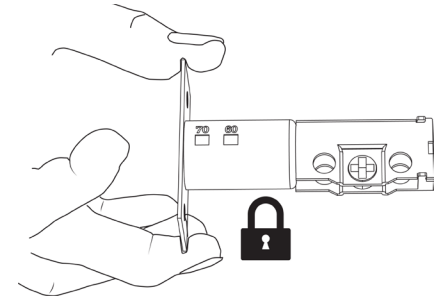
# INSTALLATION INSTRUCTIONS FOR DEADBOLT

## PARTS



## STEP 1

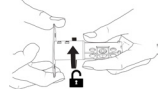
The latch is set to 2-3/8 (60mm). If it needs to be adjusted to 2-3/4 (70 mm) follow the next step.



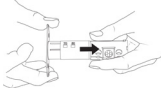
## STEP 2

Adjusting the latch:

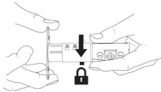
Rotate the latchplate in a clockwise position.



Pull the latch out as far as it can go.

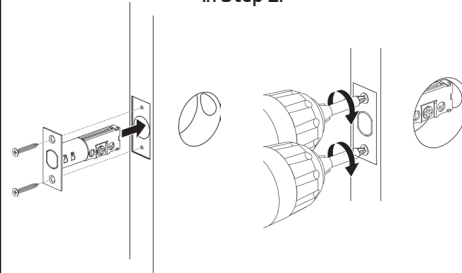


Rotate it in a clockwise position to click it into place.



## STEP 3

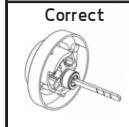
Install the latch onto the door. If the hole is not centered, adjust the latch size as instructed in Step 2.



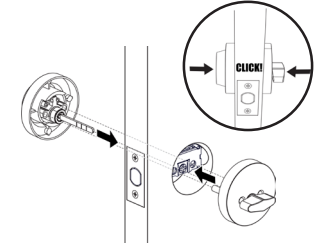
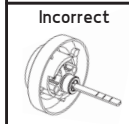
## STEP 4

Make sure the extended rod is in a downwards position. Connect the exterior deadbolt with the interior deadbolt through the latch.

Correct

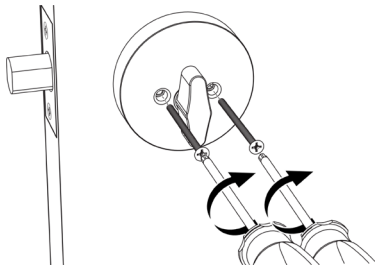


Incorrect



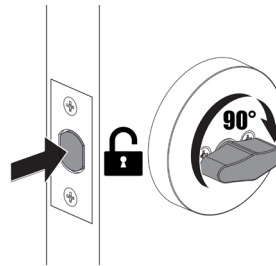
## STEP 5

Secure the deadbolt with screws.



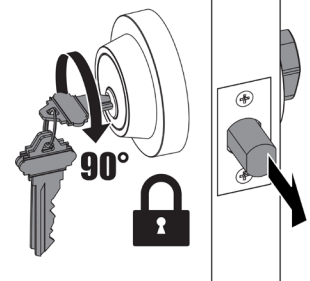
## STEP 6

Test to ensure that the lock works properly.

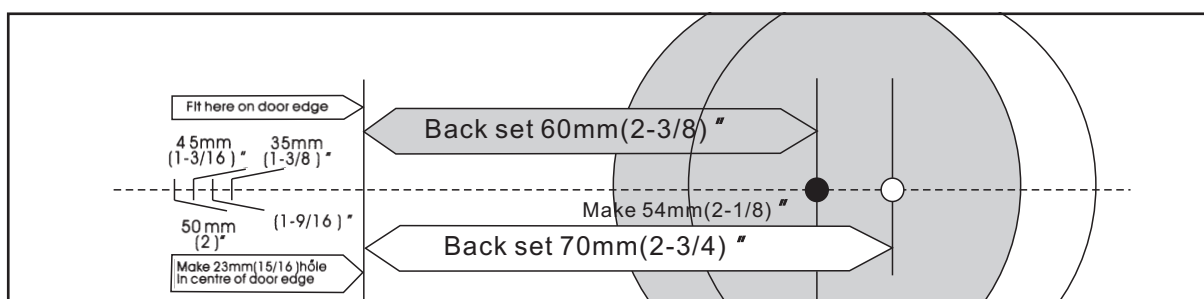


## STEP 7

Test to ensure that the keys work properly.



## DEADBOLT INSTALLATION TEMPLATE

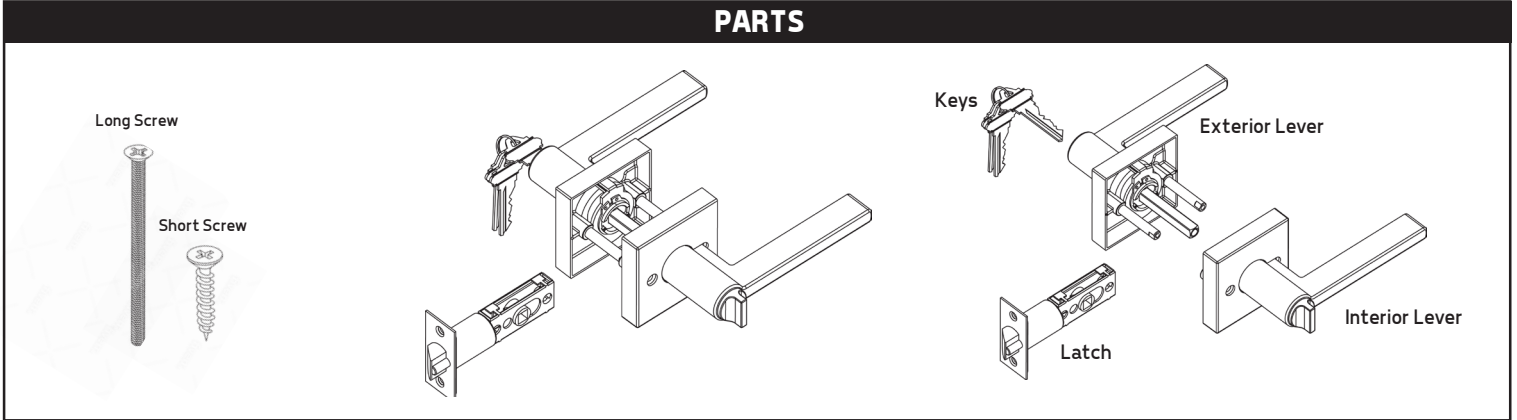




# INSTALLATION INSTRUCTIONS

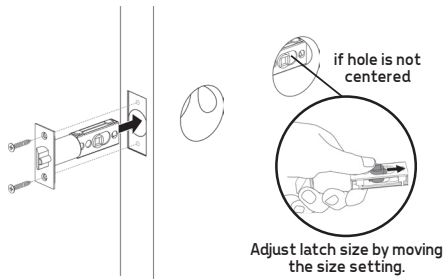
## FOR ENTRY LEVER HANDLE SETS

### PARTS



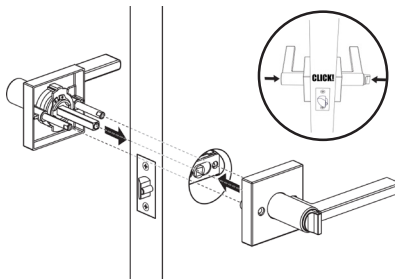
### STEP 1

Install the latch onto the door and ensure that the hole is centered. Use the shorter screws.



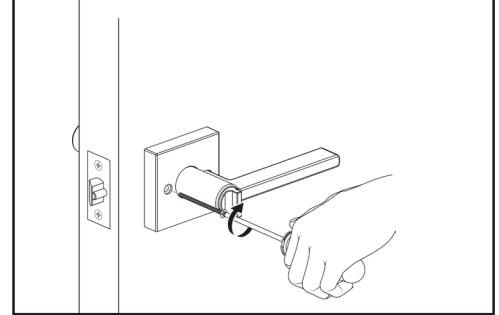
### STEP 2

Connect the exterior lever with the interior lever through the latch.



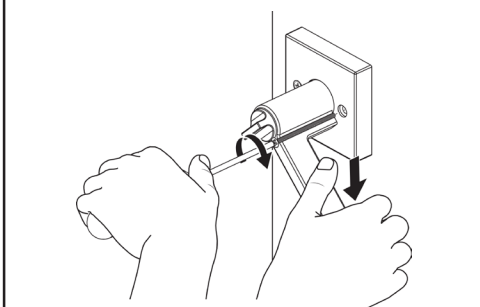
### STEP 3

Secure the left screw first.



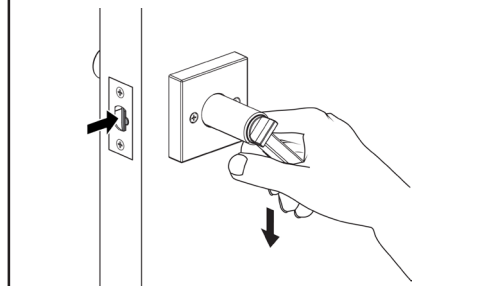
### STEP 4

Hold the lever down while securing the right screw.



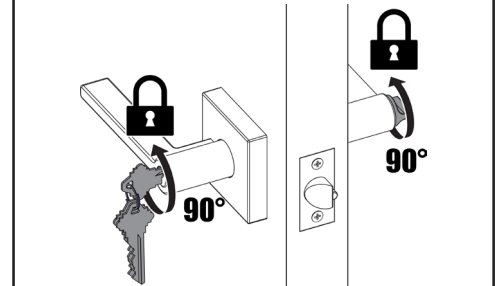
### STEP 5

Test the handle to ensure that all parts work together correctly.

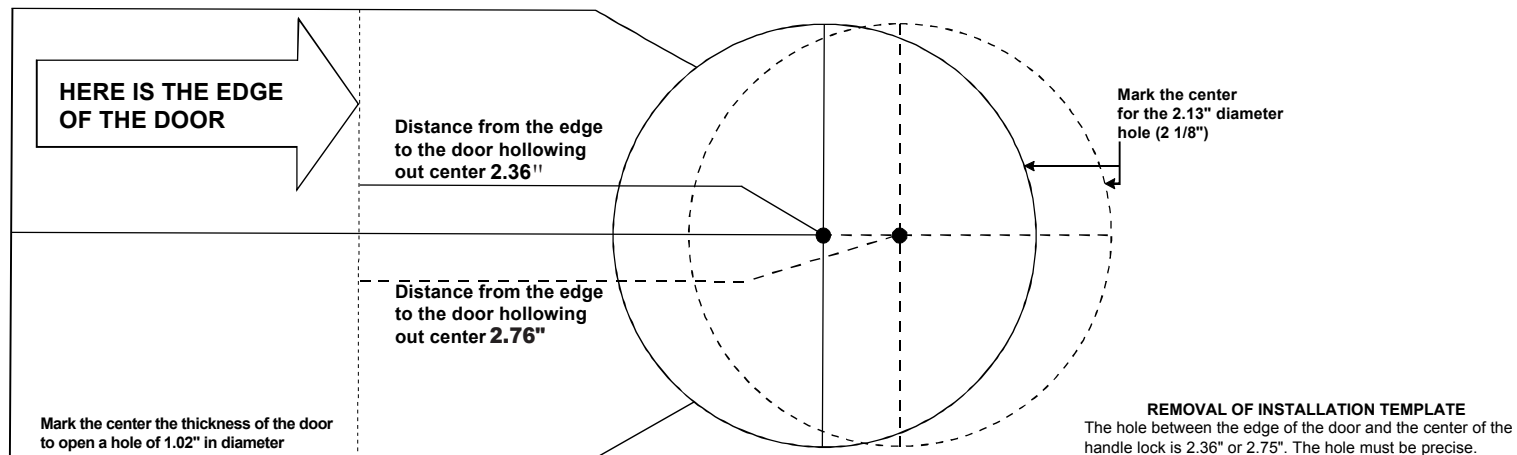


### STEP 6

Test the lock and keys to ensure that it works properly.



### HANDLE LOCK INSTALLATION TEMPLATE



**REMOVAL OF INSTALLATION TEMPLATE**  
The hole between the edge of the door and the center of the handle lock is 2.36" or 2.75". The hole must be precise. The operation of the lock depends on it.