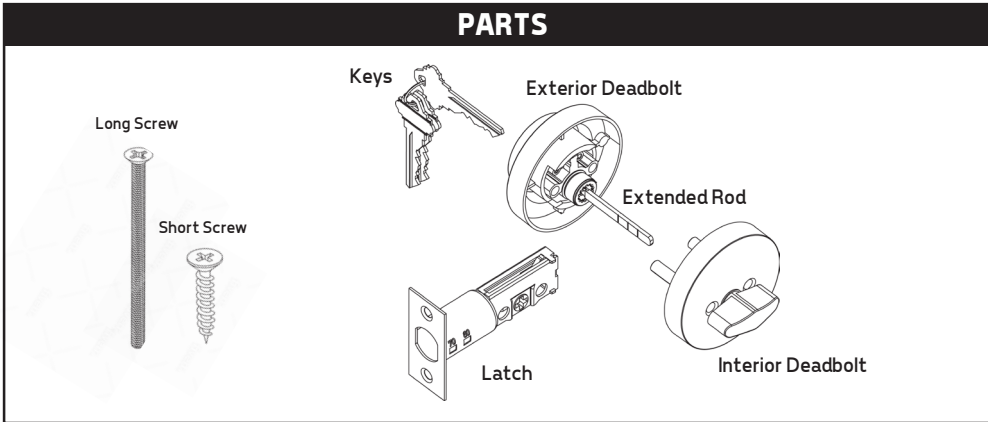




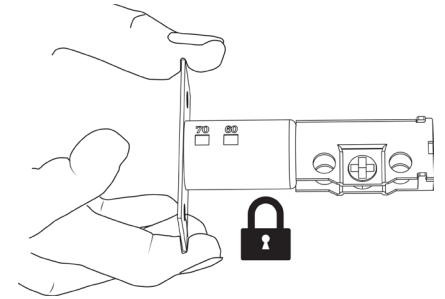
# INSTALLATION INSTRUCTIONS FOR DEADBOLT

## PARTS



## STEP 1

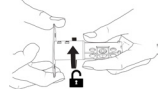
The latch is set to 2-3/8 (60mm). If it needs to be adjusted to 2-3/4 (70 mm) follow the next step.



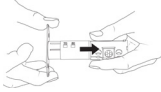
## STEP 2

Adjusting the latch:

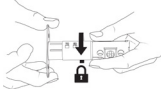
Rotate the latchplate in a clockwise position.



Pull the latch out as far as it can go.

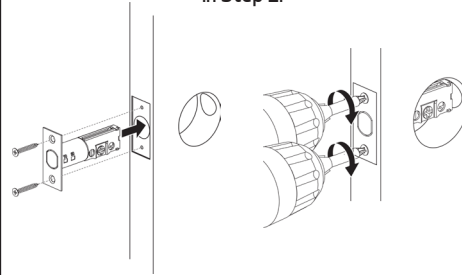


Rotate it in a clockwise position to click it into place.



## STEP 3

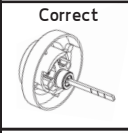
Install the latch onto the door. If the hole is not centered, adjust the latch size as instructed in Step 2.



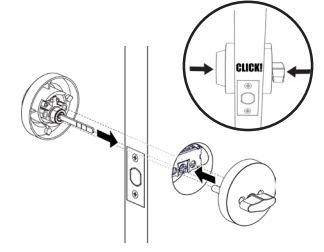
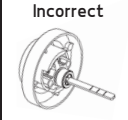
## STEP 4

Make sure the extended rod is in a downwards position. Connect the exterior deadbolt with the interior deadbolt through the latch.

Correct

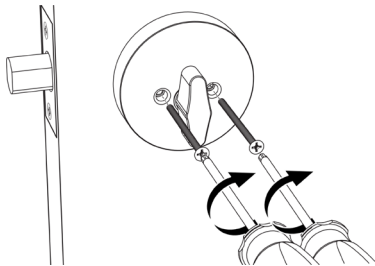


Incorrect



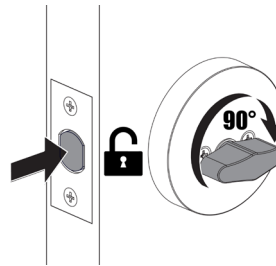
## STEP 5

Secure the deadbolt with screws.



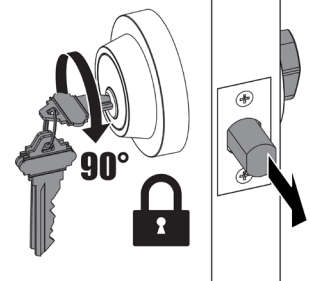
## STEP 6

Test to ensure that the lock works properly.



## STEP 7

Test to ensure that the keys work properly.



## DEADBOLT INSTALLATION TEMPLATE

