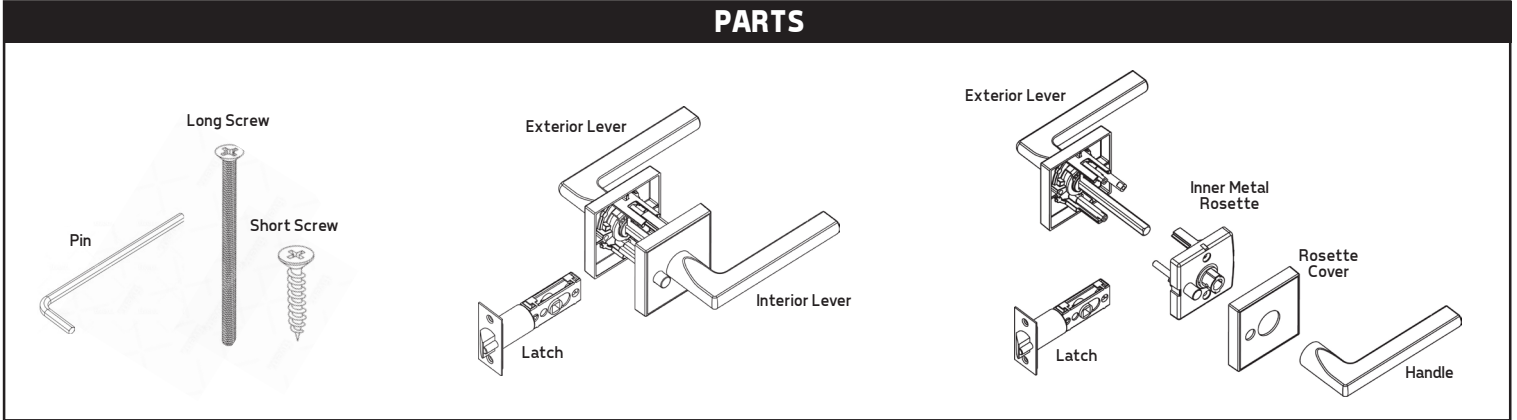




INSTALLATION INSTRUCTIONS

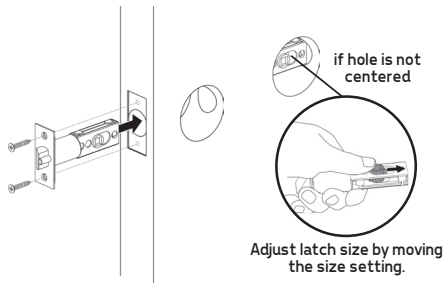
FOR COVERED SCREW PASSAGE AND PRIVACY HANDLE SETS

PARTS



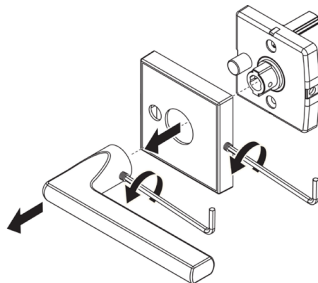
STEP 1

Install the latch onto the door and ensure that the hole is centered. Use the shorter screws.



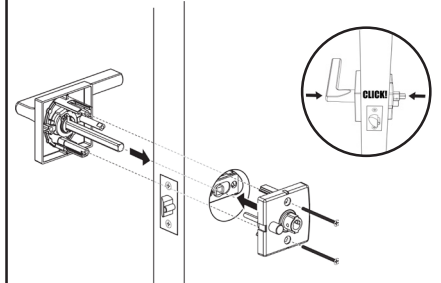
STEP 2

Unscrew the handle and the rosette cover from the interior handle using the pin included.



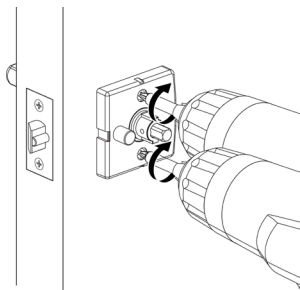
STEP 3

Connect the exterior lever with the inner metal rosette through the latch.



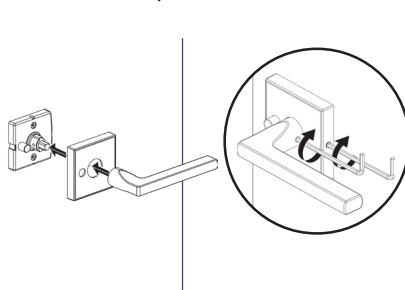
STEP 4

Drill with the long screws to secure.



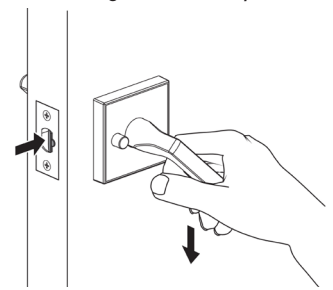
STEP 5

Reconnect the rosette cover and handle using the pin included.



STEP 6

Test the handle to ensure that all parts work together correctly.



HANDLE LOCK INSTALLATION TEMPLATE

