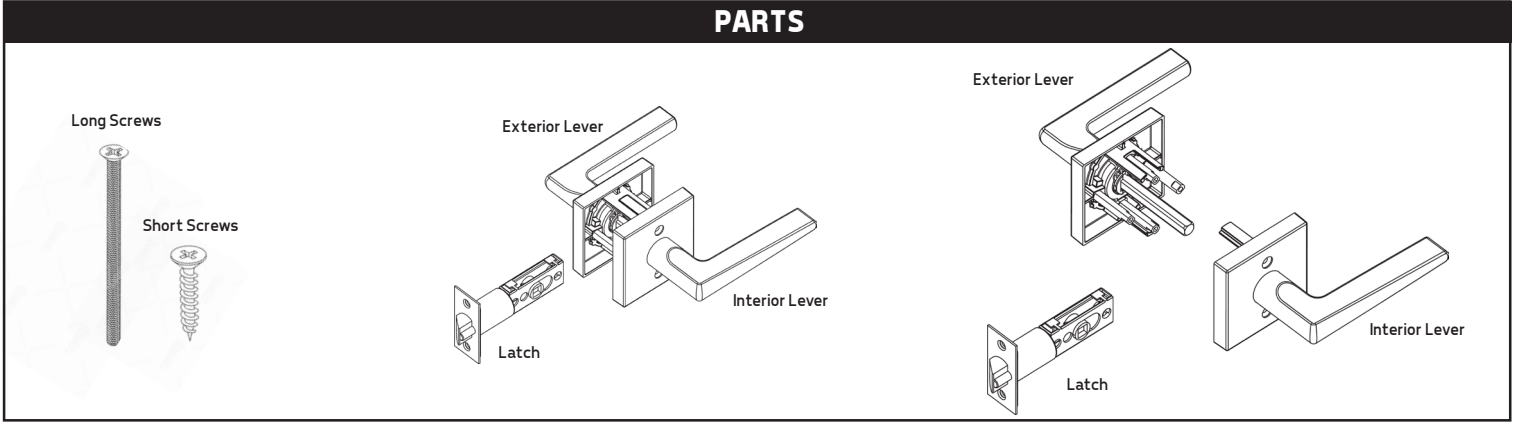




# INSTALLATION INSTRUCTIONS

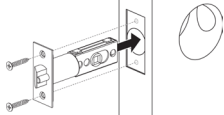
## FOR EXPOSED SCREW PASSAGE AND PRIVACY HANDLE SETS

### PARTS



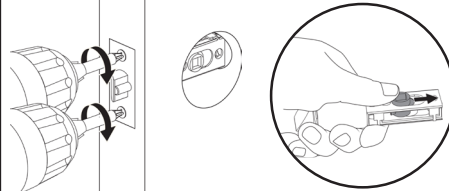
### STEP 1

Install the latch onto the door and ensure that the hole is centered. Use the shorter screws.



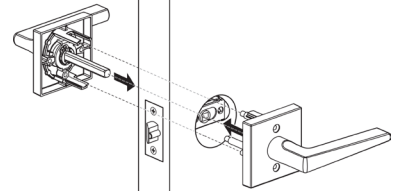
### STEP 2

If the hole is not centered, adjust the latch size by moving the size setting. Secure the latch with screws.



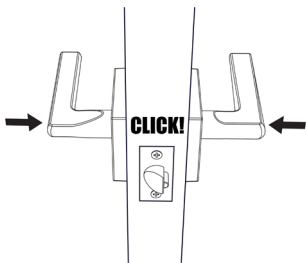
### STEP 3

Connect the exterior lever with the interior lever through the latch.



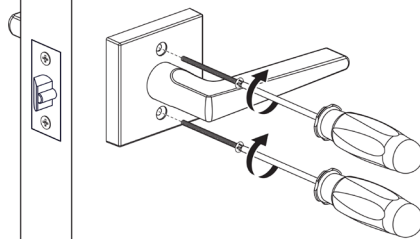
### STEP 4

Ensure that the interior lever and exterior lever clicked together properly.



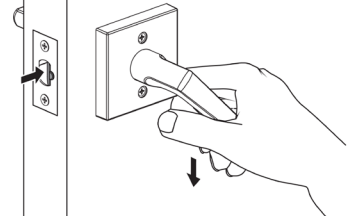
### STEP 5

Secure the lever using the long screws.



### STEP 6

Test the handle to ensure that all parts work together correctly.



### HANDLE LOCK INSTALLATION TEMPLATE

