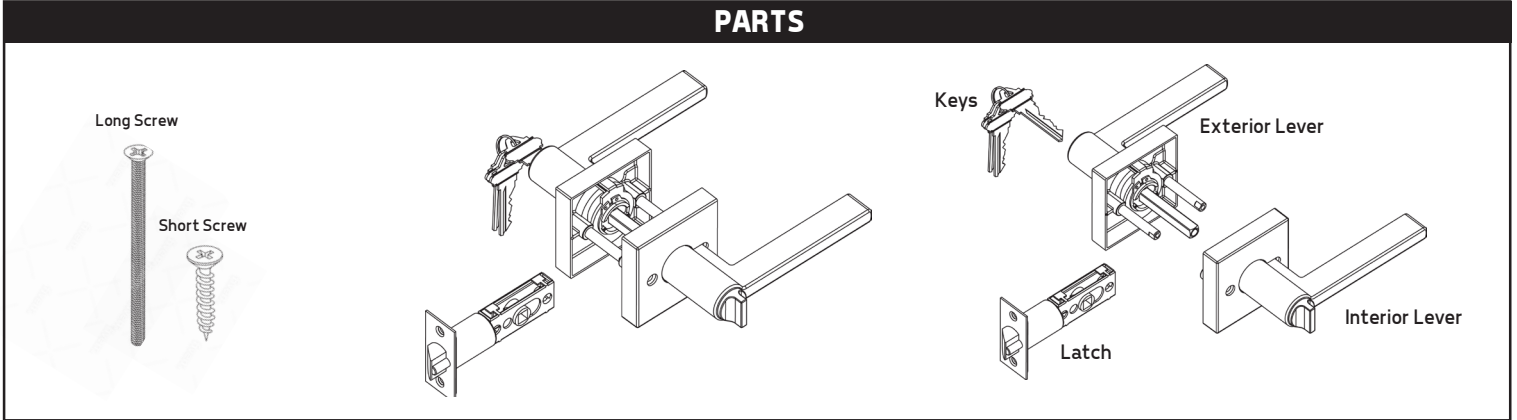




# INSTALLATION INSTRUCTIONS

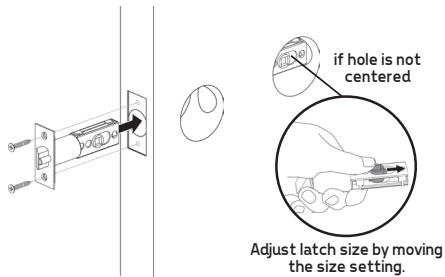
## FOR ENTRY LEVER HANDLE SETS

### PARTS



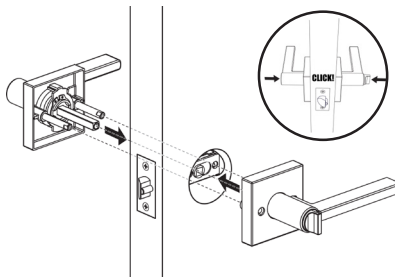
### STEP 1

Install the latch onto the door and ensure that the hole is centered. Use the shorter screws.



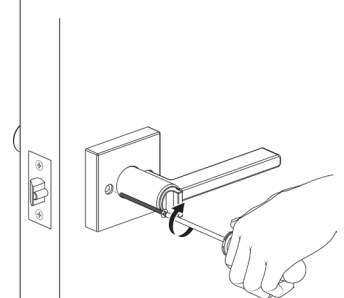
### STEP 2

Connect the exterior lever with the interior lever through the latch.



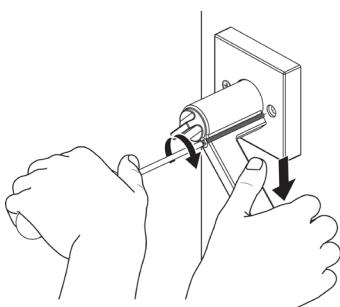
### STEP 3

Secure the left screw first.



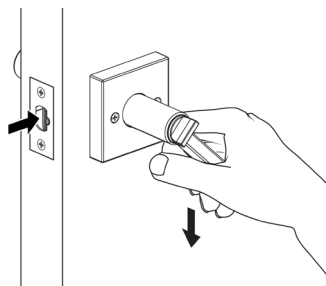
### STEP 4

Hold the lever down while securing the right screw.



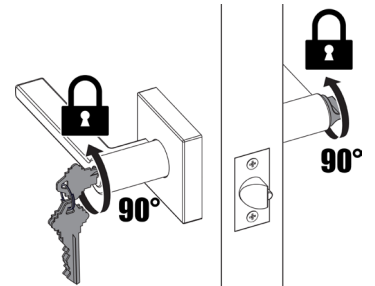
### STEP 5

Test the handle to ensure that all parts work together correctly.



### STEP 6

Test the lock and keys to ensure that it works properly.



### HANDLE LOCK INSTALLATION TEMPLATE

