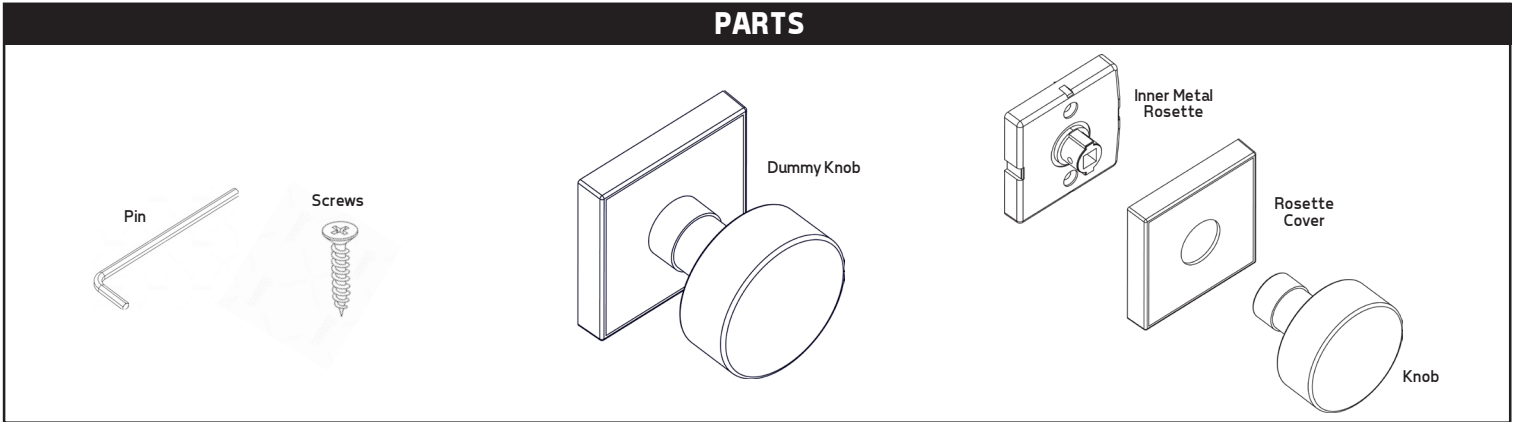




INSTALLATION INSTRUCTIONS

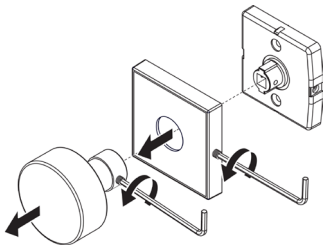
FOR COVERED SCREW DUMMY KNOB SETS

PARTS



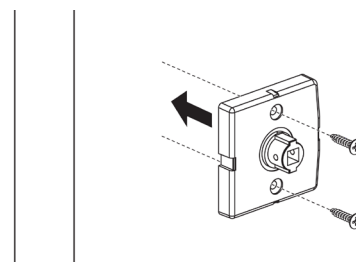
STEP 1

Unscrew the knob and the rosette cover from the interior handle using the pin included.



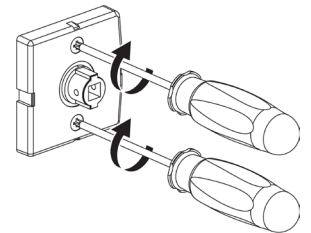
STEP 2

Install the inner metal rosette onto the door.



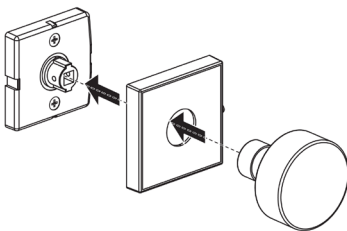
STEP 3

Tighten the screws to secure.



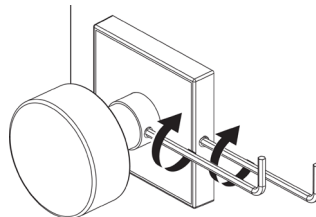
STEP 4

Reconnect the rosette cover and knob.



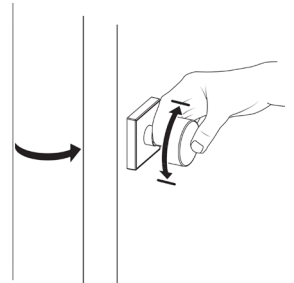
STEP 5

Tighten the rosette cover and the knob using the pin included.



STEP 6

The dummy knob does not turn when in use.



MEGA HANDLES

Questions? We are here to help!
Please email support@megahandles.com